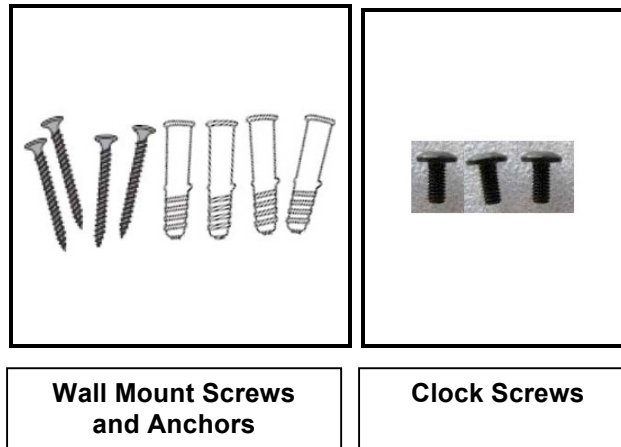


B2000 Clock Mounting Instructions

Box Contents:

1 B2000 Clock
1 Power Supply Cord
1 Ethernet Cable
1 USB Cable
4 Screws
4 Wall Anchors
3 Clock Screws (small black screws)
1 Metal Mounting Plate
1 Screwdriver

Included Parts:



Tools Needed:

pencil, level, drill, 1/4inch drill bit, hammer,

Clock Installation

Before mounting the clock on the wall consider the location of available power and Ethernet connections.

1. Remove the B2000 clock from the box and from the plastic wrapping.
2. Draw a level line on the wall where you want the clock to be (3'10" above the floor is about the same height as light switches).
3. Hold the mounting bracket to the wall and drill four holes in the appropriate positions in the bracket.
4. Hammer a wall anchor into each of the holes until they are flush with the wall.
5. While holding the mounting bracket in position, tighten a mounting screw into each of the anchors.
6. Plug the Ethernet cable and power cable into the clock. Guide the cords through the cord spaces on the back of the clock.
7. Place the clock carefully on the mounting bracket. The bottom tab on the mounting bracket should go into the rectangle near the bottom, center of the clock. Screw one of the small black clock screws into the hole in the bottom of the clock.