



Inventory Control

Quick Start Guide



© Copyright Wasp Barcode Technologies 2008

No part of this publication may be reproduced or transmitted in any form or by any means without the written permission of Wasp Barcode Technologies. The information contained in this document is subject to change without notice.

Wasp and the Wasp logo are registered trademarks of Wasp Barcode Technologies. All other trademarks or registered trademarks are the property of their respective owners.

CONGRATULATIONS

Congratulations on your purchase of InventoryControl! This guide will take you through the installation process and help you set up your software.

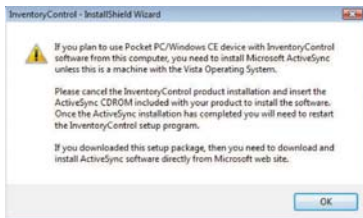
SECTION 1. INSTALL THE SOFTWARE	2
STEP 1 INSTALL THE SOFTWARE	2
STEP 2 SETUP YOUR DATABASE	12
STEP 3 CREATE INVENTORY LABELS	14
STEP 4 USE YOUR MOBILE DEVICE	15
STEP 5 AUDIT YOUR INVENTORY	15
SECTION 2. Professional Edition Installation	16
SECTION 3. Enterprise Edition Installation	22
SECTION 4. Client Installs	28
SECTION 5. FAQ	31

23808

SECTION 1. INSTALL THE SOFTWARE

STEP 1**INSTALL THE SOFTWARE**

1 Insert the installation disk into your computer. After the setup program finishes preparing the InstallShield wizard, the following message appears:



The Microsoft ActiveSync software is on a separate CD shipped with your InventoryControl software CD, or you can download the latest version from Microsoft's web site. See step 7a for instructions to install ActiveSync.

If you are installing on Vista you can skip installing ActiveSync.

If the setup program does not automatically start, see the FAQ at the end of this guide for manual start directions. The steps to install and setup the mobile device start in step 7 of this section.

Note: The following warning message may also appearing if you are upgrading from a previous version of InventoryControl:

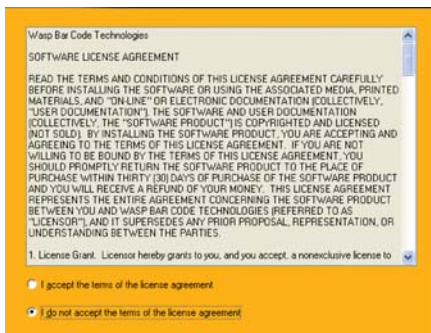


- 2 After you click **OK**, the installation wizard welcome screen appears:



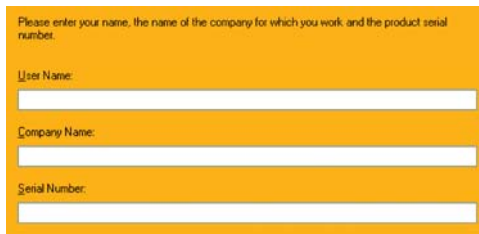
Click **Next** on this screen to begin installing InventoryControl.

- 3 Next the **License Agreement** screen appears.



Review the license agreement, then select ***I accept the terms of the license agreement***. Click the **Next** button to continue. You will not be able to continue installing the application until you select the ***I accept the terms of the license agreement*** option.

- 4 The **User Registration** screen appears:



Please enter your name, the name of the company for which you work, and the product serial number.

User Name:

Company Name:

Serial Number:

Enter your **User Name** (this can be any name of your choice), your **Company Name** and the **Serial Number**. The serial number can be found on or in the case containing your InventoryControl software—it will be a 19 digit number that should start with 0570.

- 5 Next a screen displays listing the default **Destination Folder** for installation of InventoryControl:
(C:\Program Files\Wasp Technologies\InventoryControl).

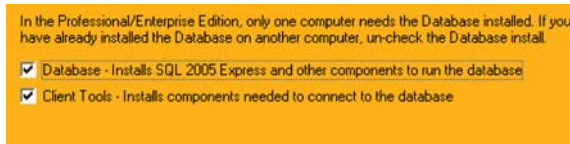


Setup will install InventoryControl in the following folder.
To install to this folder, click Next. To install to a different folder, click Browse and select another folder.

Destination Folder
C:\Program Files\Wasp Technologies\InventoryControl

You can select a new destination by clicking the **Browse** button and navigating to a new folder, or accept the default location (recommended) by clicking the **Next** button.

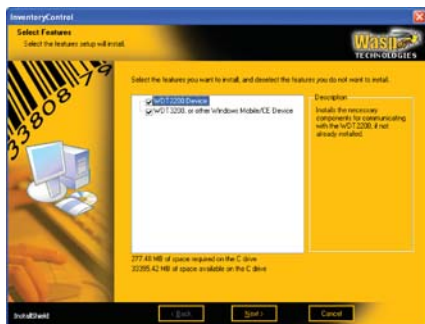
6 If you are installing the Pro version, the following screen appears:



If you have already installed the database on another computer, deselect the **Database** checkbox on this screen (you only need to install the **Client Tools** to enable the software to talk to the database).

To help you decide which options to pick on this screen refer to **“SECTION 2. Professional Edition Installation”** or **“SECTION 3. Enterprise Edition Installation.”**

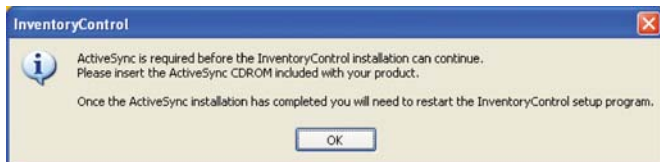
7 Next, a screen appears asking which type of mobile device you are installing:



Select the checkbox next to the type of mobile device you are going to use with the software. If you will not be using a mobile device, leave both of these checkboxes blank. Click the Next button to continue. If you select to install only the WDT2200, go to Step 8.

If you are installing a Windows Mobile/CE Device:

a. If you select to install a Windows Mobile/CE Device, the message shown below will appear if you have not installed ActiveSync:



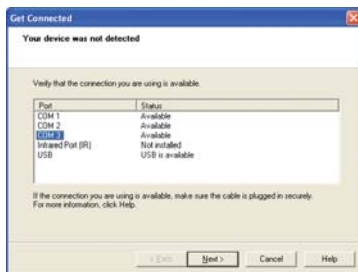
b. Leave the screen as it is and insert the ActiveSync CDROM (included in your InventoryControl package). Follow the prompts on the ActiveSync installation screens. You should install the files to the default directory. It is okay to remove the InventoryControl CD and install ActiveSync. After ActiveSync is installed put the InventoryControl CD back in the drive.

Reboot Note: At the end of the Windows Mobile/CE Device installation you may be prompted to reboot your computer. Select **NOT** to reboot at this time (you will be given the opportunity to reboot after the entire InventoryControl installation is complete).

c. When ActiveSync has completed installation, it will try to connect to the Windows Mobile/CE Device and the following screen appears:



Connect the cable of your mobile device to the PC, turn on the device then place the device in its charging cradle or connect to the data cable.



If the device is **not** automatically detected, check the settings, connection and make sure the device is on, select the correct port from the list in the screen shot above then click the **Next**.

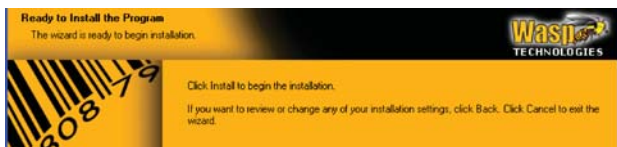
After the driver is detected a partnership must be created.



During Partnership Setup you should use the defaults pre-populated in each section.

d. After returning to the InventoryControl install, click **OK** on the screen shown in step 7a.

- 8** After Microsoft ActiveSync software is successfully installed, the InventoryControl installation will continue. If you want to make changes to your destination folder at this point, click the **Back** button. If you are ready to install InventoryControl, click the **Install** button.

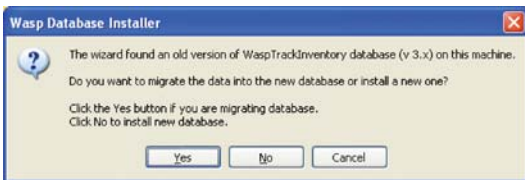


- 9** A series of progress screens appear. The installation process may take a few minutes. Some of the third party software installation may not show progress; please be patient and give it a few minutes to complete.

- 10** If you are upgrading from a previous version of InventoryControl or MobileInventory, the installer will detect the old database and ask you if you want to convert your data or start from scratch.



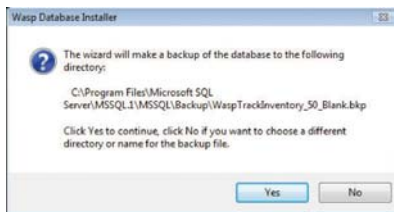
23808



Note: If you do not have a previous version installed, this screen will state that another database was not found. You will still be given the opportunity to migrate a database.

Select **Yes** to allow the installer to migrate your database. Select **No** to install a new database.

11 The system will make a backup of your database at the location specified.



Click **Yes** to accept the default location or **No** to choose a different location or to rename the backup file.

The Computer Name screen is displayed once the database install is complete.

Important:

Record your **Computer Name** before clicking the **OK** button. This name must be known when you perform your Client Tools installation. Record your **Computer Name** here:

12 Crystal Reports will install next. A series of status screens will appear. You do not need to do anything during this process.

13 After InventoryControl installs, the Wasp Labeler installation screen appears. Labeler installs to allow you to view, edit and print labels that are included in InventoryControl and to create new labels. Labeler must be installed to print any label from InventoryControl.



You can select a new destination by clicking the **Browse** button and navigating to a new folder, or accept the default location by clicking the **Next** button.

14 A series of progress screens will appear as Labeler is installing.

15 After the entire installation process is complete, a screen may appear asking if you want to reboot your computer.



23808

Select **Yes**, I want to restart my computer now, remove any installation disks from their drives, then click **Finish**. Your system will reboot.

InventoryControl and WaspLabeler icons will appear on your desktop.

The default **User Name** is Admin and there is no password.

The first time you run InventoryControl you should visit our website and register the software. When you register make sure to pick InventoryControl as the product and use the serial number you used during installation to register. An activation key will be emailed to you that will fully enable the application.

STEP 2

SETUP YOUR DATABASE

Now that your software is installed, you will want to take a few minutes to properly enter information into your database. You must setup items on the PC before using the mobile device. The mobile device does not allow you to add new items.

For detailed information on how to setup your software, please refer to InventoryControl's online help system. You can access the online help by clicking **Help > Contents** from the toolbar or by selecting the **Help** button or pressing **F1** on any screen.

Methods of Data Entry (Importing vs. Manual Entry):

There are two ways you can add information to your database: through manual entry or by importing the data from an existing

database. Importing data can be much quicker if you wish to transfer a large amount of information from an existing database to InventoryControl. Importing this information also ensures you do not introduce new typographical errors.

You must import the data in a set order. Detailed instructions for importing data can be found in the online help. The outline below details the order in which data must be imported into the system. For a more detailed explanation and outline, please refer to the **Importing into the Database** topic in the online help. InventoryControl will only accept the data in this specific order because each piece of information builds on the next to create a complete profile for your inventory. For instance, inventory must be assigned to a specific Location, therefore, you must import your Locations first so that InventoryControl will have this information prior to importing your inventory counts. Again, we strongly recommend that you review the information regarding importing data in the online help before you begin the import process.

Import Order:

- A. Site (required)
- B. Locations (required)
- C. Suppliers (optional)
- D. Manufacturers (optional)
- E. Customers (optional - import if you will be checking out/in inventory to customers)
- F. Items (required)
- G. Inventory (optional)

If you plan on importing information, you should also keep in mind that some types of supplemental information cannot be imported. For instance, if you wish to set up primary location settings for item and item specific supplier information, you will need to manually create these from the Item Edit screen.



Imported data must be in .csv format. For further information, please refer to the **Import Specifics** and **Importing Into the Database** topics in the online help. You can also find sample .csv files with the header and one row of sample data installed with the client in the “Import Samples” folder.

STEP 3

CREATE INVENTORY LABELS

Inventory Labels should be printed and attached to inventory in your warehouse. When you setup your items, remember that you entered a number for each item in the Item Number field of the Create New Item screen (if you manually entered your items) or in the Item Number column (if you imported the data). Now an actual label should be printed that contains the Item Number and (usually) a barcode for quick identification and tracking. These labels should be affixed to each piece of inventory.

InventoryControl came bundled with the Wasp Labeler application making the creation of these Inventory Labels simple. Wasp Labeler was installed when you installed InventoryControl. To use this function, from InventoryControl’s **Main Menu**, click the **Labels** icon. The **Labels** menu will appear. Select **Inventory Item** from the Labels menu. You can now print your Inventory Labels.

You can print the needed number of labels from the **Add Inventory** screen. Each time you add inventory, you can enter a number of Labels in the **No. of Labels** field. This tells the software to print the specified number of labels. For instance, if you add a quantity of 2 to an item, you can enter 3 in the **No. of Labels** field to print three new Inventory Labels.

STEP 4

USE YOUR MOBILE DEVICE

At this point you can use the InventoryControl interface to create a mobile database, put it on the mobile device and start using the mobile device. You cannot add new items on the mobile device, so make sure you have at least one item entered before trying to use the mobile device. We suggest that the first thing you do using the mobile device is to take an Audit. Please refer to the online help for more details.

STEP 5

AUDIT YOUR INVENTORY

Now that your database is setup, you should take an audit of your inventory. This ensures you have not missed an item, miss-labeled an item or assigned an item to the wrong location. The quickest way to do this is to use your mobile device to scan each piece of inventory. You will need to setup your mobile device prior to performing this step. Please refer to the **Working With Mobile Devices** section of your online help system for assistance setting up, using and syncing your mobile devices. For detailed information on auditing your inventory, please refer to the topic **Auditing Your Inventory** in the online help.

Synchronize the data you have collected on your mobile device back to the PC.

If you have chosen not to install a mobile device, you will need to do this audit manually by physically checking each piece of inventory and comparing against the database.

23808

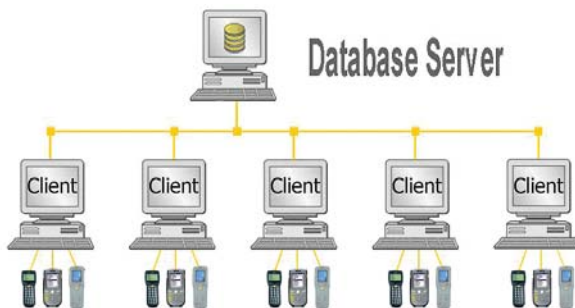
SECTION 2. PROFESSIONAL EDITION INSTALLATION

In this guide when we refer to a client we are talking about any machine where you want to use InventoryControl's interface to manage your inventory. The database server is a machine that may or may not also be a client where the database is installed. The server should be a computer that is on all the time and is accessible from all machines that you intend to use as clients.

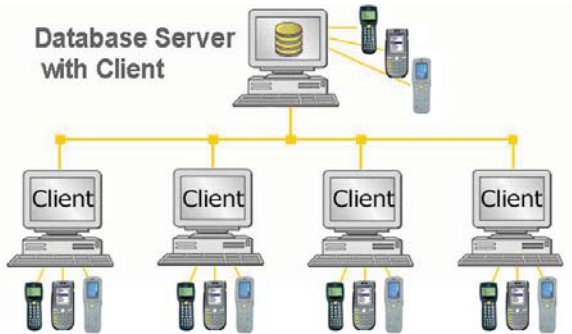
InventoryControl Pro Edition takes advantage of your existing TCP/IP network to allow up to five InventoryControl Client workstations to access a single database located at the InventoryControl Server. The Client software may optionally be installed on the same machine where the InventoryControl Server database is installed.

INSTALLATION

InventoryControl Pro ships with one Server license and five Client Licenses. InventoryControl Pro Edition may be installed in your choice of these two configurations:



23808



Refer to the diagram above and the hardware requirements below to decide how you will deploy the Licenses in your environment.

Minimum Server Configuration	Recommended Server Configuration
800 MHz CPU	1.0+ GHz CPU
256 MB of RAM	512 MB of RAM
1 GB of disk space available	1 GB of disk space available
CD-ROM drive (for installation only)	
Any version of Microsoft® <i>Windows® XP, 2000, Server 2003 or Vista</i>	

Minimum Client Configuration	Recommended Client Configuration
350 MHz CPU	750 MHz CPU
128 MB of RAM	256 MB of RAM
1 GB of disk space available	
1,024x768 pixel display with a color depth of at least 256 colors	
CD-ROM drive (for installation only)	
Any version of Microsoft® <i>Windows® XP, 2000, Server 2003 or Vista</i>	

Notes:

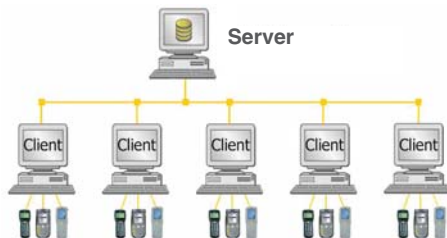
- InventoryControl Server and Client installation on Microsoft® Windows® 98SE, NT or ME machines is not supported.
- InventoryControl Clients will not work without connecting to a running InventoryControl Server.
- The database server will restart automatically every time the computer is rebooted.

On the **Select Installation Type** screen:

In the Professional/Enterprise Edition, only one computer needs the Database installed. If you have already installed the Database on another computer, un-check the Database install.

- Database - Installs SQL 2005 Express and other components to run the database
- Client Tools - Installs components needed to connect to the database

When selecting the InventoryControl server configuration, shown below, uncheck the **Client Tools** option and only the Database will be installed on this machine.



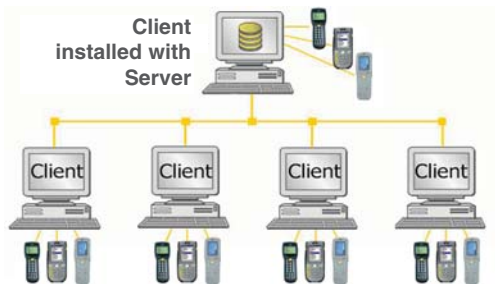
In the Professional/Enterprise Edition, only one computer needs the Database installed. If you have already installed the Database on another computer, un-check the Database install.

If you are upgrading from version 3.x, you must install the new database on the server machine. You will be prompted later in this installer to migrate your old database to the new one.

- Database - Installs SQL 2005 Express and other components to run the database
- Client Tools - Installs components needed to connect to the database

23808

When selecting the InventoryControl server configuration shown below, leave the check in the **Client Tools** option and the **Database** option; then, the **Server** and one **Client** will be installed on this machine.



In the Professional/Enterprise Edition, only one computer needs the Database installed. If you have already installed the Database on another computer, un-check the Database install.

- Database - Installs SQL 2005 Express and other components to run the database
- Client Tools - Installs components needed to connect to the database

Remember that there are only five Client licenses, so you might want to deselect the **Client Tools** component if you would rather deploy all of your Client licenses on machines other than this Server machine. If you deselect **Database** here, you will not be installing the server.

The **Computer Name** screen is displayed once the Database Server install is complete.



Important:

Record your **Computer Name** before clicking the **OK** button. This name must be known when you perform your Client Tools installation. Record your **Computer Name** here:

The Client Tools component of InventoryControl Pro Edition can be installed once an InventoryControl Server has been installed and is running. See “**SECTION 4. Client Installs**” for instructions.

23808

SECTION 3. ENTERPRISE EDITION INSTALLATION

In this guide when we refer to a client we are talking about any machine where you want to use InventoryControl's interface to manage your inventory. The database server is a machine that may or may not also be a client where the database is installed. The server should be a computer that is on all the time and is accessible from all machines that you intend to use as clients.

InventoryControl Enterprise Edition takes advantage of your existing TCP/IP network and your current installation of MS SQL Server to allow a number of Client workstations to access the InventoryControl Database. The Client software may optionally be installed on the same machine where the database is installed.

INSTALLATION

InventoryControl Enterprise ships with one Server license and the ability to connect an unlimited number of Clients connections:



Refer to the diagram above and the hardware requirements below to decide how you will deploy InventoryControl Enterprise in your environment.

23808

Minimum Server Configuration	Recommended Server Configuration
800 MHz CPU	1.0+ GHz CPU
256 MB of RAM	512 MB of RAM
1 GB of disk space available	1 GB of disk space available
CD-ROM drive (for installation only)	
Any version of Microsoft® <i>Windows® XP, 2000, Server 2003 or Vista</i>	
Microsoft® SQL Server 2000 or Microsoft® SQL Server 2005	

Minimum Client Configuration	Recommended Client Configuration
350 MHz CPU	750 MHz CPU
128 MB of RAM	256 MB of RAM
1 GB of disk space available	
1,024x768 pixel display with a color depth of at least 256 colors	
CD-ROM drive (for installation only)	
Any version of Microsoft® <i>Windows® XP, 2000, or Server 2003</i>	

NOTE:

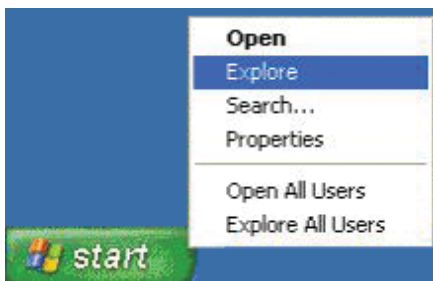
- InventoryControl Server and Client installation on Microsoft® Windows® 98SE, NT or ME machines is not supported.
- InventoryControl Clients will not work without connecting to a running InventoryControl Server.
- The database server will run automatically every time the computer is rebooted.
- Microsoft .NET Framework 2.0 must be installed on the server before the Enterprise DB Installer will run.

Server Installation Procedures:

Some database administrators would prefer to run the database install scripts manually. We provide all the database creation scripts on the CD for this purpose, but the order that these scripts are run is critical. We suggest that you review the scripts and then follow the following steps that will run those exact scripts in the proper order.

❶ Place the CD into the CD ROM drive on the server that already has Microsoft SQL Server Full Version installed. Cancel the installation if it attempts to run automatically when the CD is placed in the CD ROM drive.

❷ Right mouse click on the **Start** icon and click the **Explore** option.



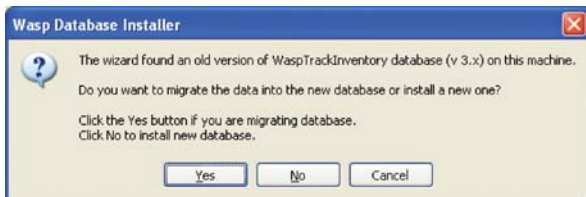
❸ Click on the disk drive location containing your Installation CD when the **Windows Explore** window appears.

❹ Locate the **EnterpriseDBInstaller** folder and double click on it.

- 5 Double click on the **InventoryDbInstaller.exe** file.



- 6 Click **Next**.



Select **Yes** to allow the installer to migrate your database.
Select **No** to install a new database.

- 7 Select the desired login method to use:

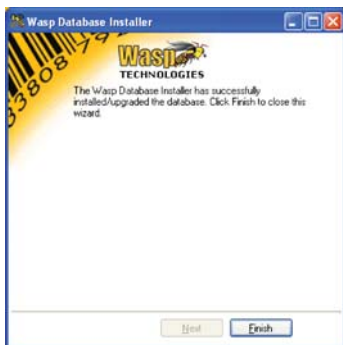
- When using, **Integrated Security**:
- Leave the box checked.

- When not using, **Integrated Security** option:
 - Uncheck check box and enter **Login ID** and **Password**.

After you select the connection method and security credentials, click **OK**.

NOTE: The **Integrated Security** check box is used to specify that SQL Server request a secure (or trusted) connection to SQL Server. SQL Server uses integrated security to establish connections using this data source, regardless of the current security mode at the server. Any login ID or password supplied is ignored. The SQL Server system administrator must have associated your Windows network ID with a SQL Server login ID.

3 Click the **Finish** button when the **Wasp Database Installer** is complete.



Now the server database installation is complete.

23808

SECTION 4. **CLIENT INSTALLS**

When the **Select Installation Type** screen is presented, select only the **Client Tools** option.

In the Professional/Enterprise Edition, only one computer needs the Database installed. If you have already installed the Database on another computer, un-check the Database install.

- Database - Installs SQL 2005 Express and other components to run the database
- Client Tools - Installs components needed to connect to the database

On the **SQL Server Location** screen:



Enter the computer name of the Server in the **Server** field and click the **Next** button. The computer name was shown during step 10 of the server install.

USING THE INVENTORYCONTROL CLIENTS

The Client licenses are “Fixed” to a specific PC. After you install a Client and run that client, it will connect to the server and register itself with the server. Information about that computer will be stored on the server. Any authorized user can connect from that computer using that one license. If five clients have been installed and registered with the server and a sixth client is installed, when that sixth client runs it will fail to connect because all licenses have been used. Even if none of the other clients are running the application, the sixth machine will be denied a license.

Functions you perform at any InventoryControl PC Client machine will impact other users at one of two possible levels, as illustrated in the following table:

Function Performed on a Client	Affects All Users, Everywhere	Affects Any User Who Logs On to this Client
Change Company Information	X	
Restore the database	X	
Import Data	X	
Edit Field Names	X	
Set Default Working Site		X
Change any Option	X	
Change Labeler Labels		X
Change Report Filters	X	
Mobile Device Database Filter Criteria	X	

SECTION 5. FREQUENTLY ASKED QUESTIONS

3808

FAQ

Q: I get this message when I run InventoryControl: “Input string was not in correct format”

A: Go the **Start → Control Panel → Administrators Tools → Services** and select **WaspLicMgr** and stop the service wait 10 seconds and reboot the machine.

Q: What is the **User Name** and **Password** when InventoryControl first runs?

A: The initial **User Name** is Admin and Admin has no password, so just leave the password field blank and click **OK**.

Q: How do I manually start the install if it does not start when I insert the CD?

- A:**
- 1** Right mouse click on the **Start** icon and click the **Explore** option.
 - 2** Click on the disk drive location containing your Installation CD to expose the CD contents.
 - 3** Locate the **WaspInstall.exe** program and double click on it. The installation process will begin.

FAQ

Q: What ports are being used by InventoryControl?

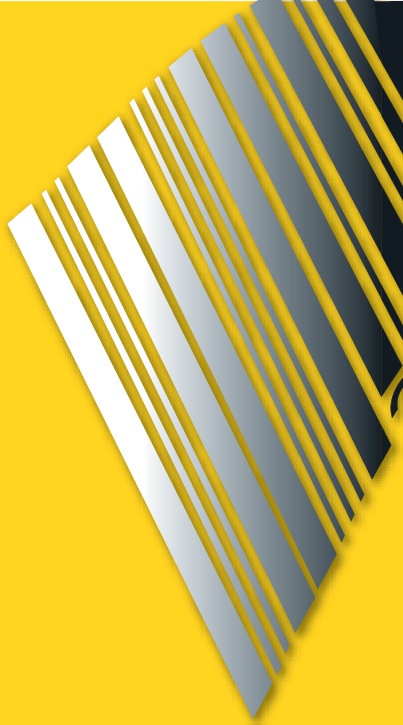
A: The Wasp License Manager uses port 10,000. The port can be changed in case of conflicts. See the Knowledge Base on the Wasp Support site at www.waspbarcode.com/support for more details.

Q: How do I get support?

A: Visit our website at www.waspbarcode.com/support for detailed support options.

Q: How do I access online help?

A: You can access the online help by clicking **Help > Contents** from the toolbar or by selecting the **Help** button or pressing **F1** on any screen.



1400 10th Street
Plano, TX 75074

Phone: 214-547-4100 • Fax: 214-547-4101
www.waspbarcode.com