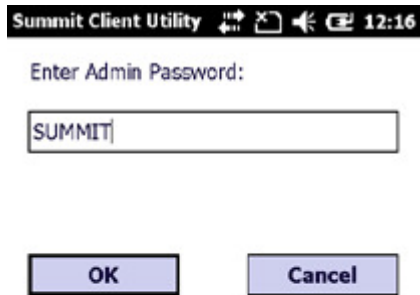


Login as an administrator, tap Admin Login.



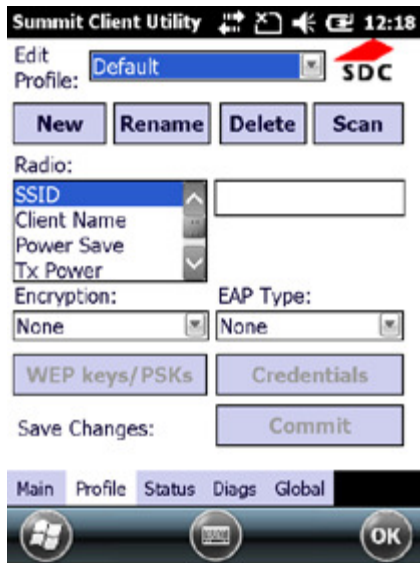
Enter the Admin Password. (Default password: SUMMIT)



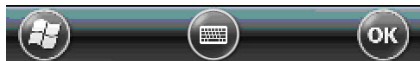
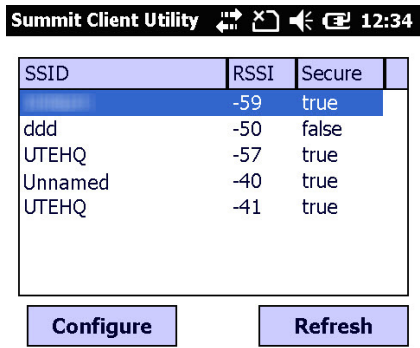
Tap **Profile** to scan available APs



Under Profile tab, tap Scan for available AP.



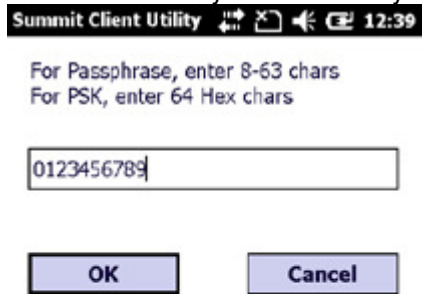
You may select a desired AP to create a new profile. Tap Configure.



Tap **Yes** to create the new profile.



Enter the WEP key or network key. Tap OK.



Summit Client Utility 12:39


For Passphrase, enter 8-63 chars
For PSK, enter 64 Hex chars

0123456789

OK Cancel



Tap Commit to activate the setting.



Summit Client Utility 12:41

Edit Profile: Unnamed SDC

New Rename Delete Scan

Radio:
SSID Unnamed
Client Name
Power Save
Tx Power

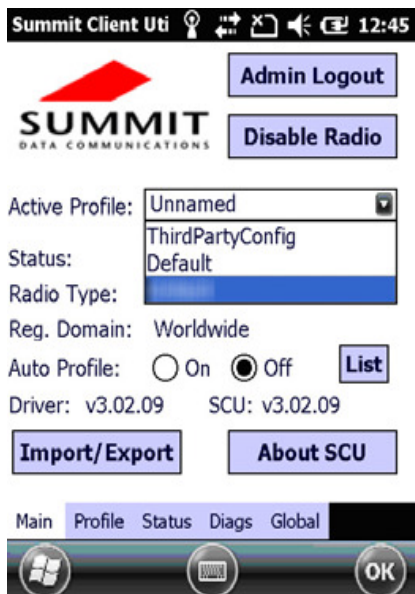
Encryption: WPA2-PSK EAP Type: None

WEP keys/PSKs Credentials

Save Changes: Commit

Main Profile Status Diags Global

Select the profile to activate from the drop-down menu of the Active Profile.



Summit Client Utility 12:45

Admin Logout

SUMMIT DATA COMMUNICATIONS

Disable Radio

Active Profile: Unnamed
ThirdPartyConfig
Default

Status:

Radio Type:

Reg. Domain: Worldwide

Auto Profile: On Off List

Driver: v3.02.09 SCU: v3.02.09

Import/Export About SCU

Main Profile Status Diags Global

Under the Status tab, you can see the IP address, signal strength and quality.

The screenshot displays the Summit Client Utility interface. At the top, there is a title bar with the text "Summit Client Utility" and several icons, including a battery icon showing 1:06. Below the title bar, the status is shown as "Profile: Unnamed" and "Status: Associated". A red arrow points to the "SDC" logo. The device name is "[Unnamed]". The IP address is "10.10.100.83" and the MAC address is "00.17.23.0b.42.da". The AP name is "UTE-801" with IP "192.168.114.28" and MAC "00.19.a9.55.f9.41". The beacon period is "100" and DTIM is "2". The connection channel is "8", bit rate is "36 Mbps", and Tx power is "50 mW". Two green bars indicate "Signal Strength: -36 dBm" and "Signal Quality: 100 %". At the bottom, there is a navigation bar with tabs for "Main", "Profile", "Status", "Diags", and "Global". The "Status" tab is selected. Below the navigation bar are three circular icons: a Windows logo, a keyboard icon, and an "OK" button.

Summit Client Utility 1:06

Profile: Unnamed
Status: Associated
Device Name: [Unnamed]
IP: 10.10.100.83
MAC: 00.17.23.0b.42.da
AP Name: UTE-801
IP: 192.168.114.28
MAC: 00.19.a9.55.f9.41
Beacon Period: 100 DTIM: 2
Connection Channel: 8
Bit Rate: 36 Mbps Tx Power: 50 mW
Signal Strength: -36 dBm
Signal Quality: 100 %

Main Profile Status Diags Global

OK