

Installation Guide for the WPD720/WPD220

The drivers for the pole display are located on the CD you receive with the pole display. You will need to follow the instructions to manually install the drivers from the CD.

1. Steps for Windows XP, Windows 7 and Vista (32bit Only)
2. Step for Installing on Windows 7 (64bit)

1. Windows XP, Windows 7 and Vista Installation Instructions (32bit Versions Only)

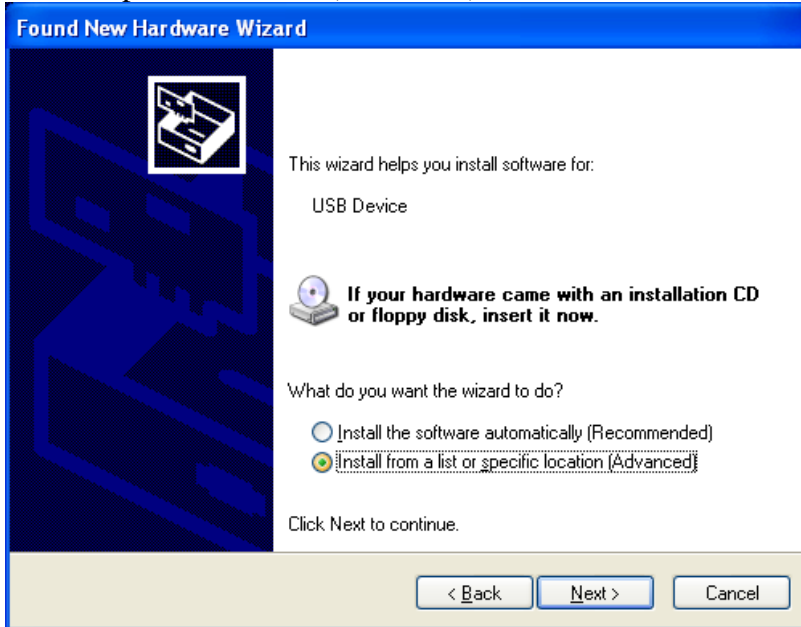
The screens will look slightly different in Windows 7 but the steps to install the driver are the same.

Plug the Pole Display into an available USB port. Windows will try to install the driver and you will see some activity in the lower right corner of your screen. The Found New Hardware Wizard will open.

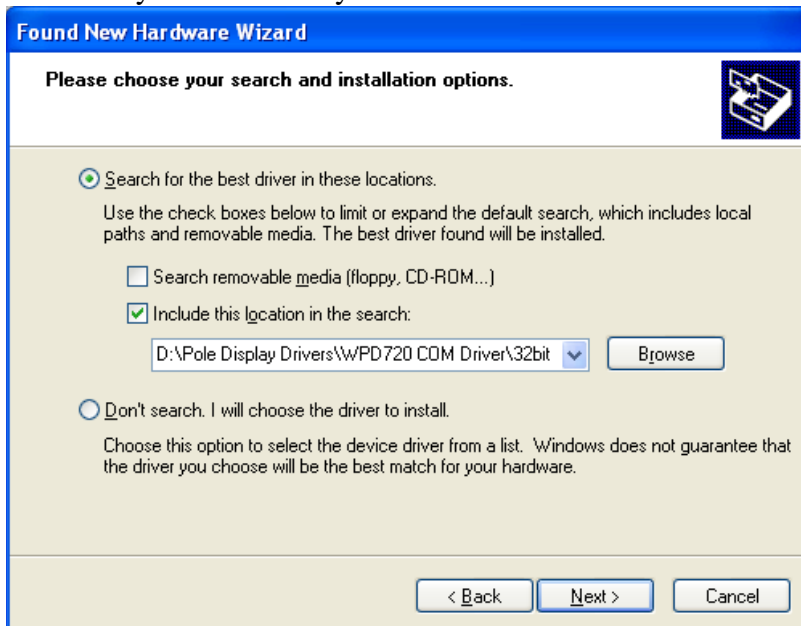
Select the option No, not at this time and click next.



The wizard will prompt you to locate the driver for the Pole Display. Select “Install from a list of specific location (Advanced)”



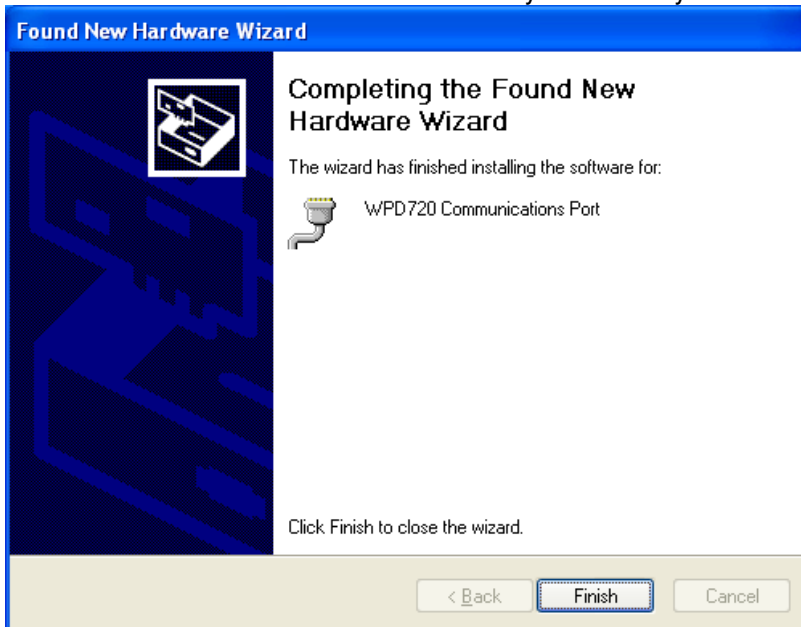
Select “Include this location in the search”. You will need to browse to your drive with the driver CD in it and open the (WPD720 COM Driver\32bit driver\ and locate the folder for your OS. Once you have the correct folder select Click next.



You will be prompted to install the driver, make sure you select “Continue Anyway” if prompted.



Click Finish. The driver is now installed and you are ready to use the pole display.



The pole display will setup on the next available COM port in your system. You may need to look in the Windows Device Manager to get the port number.

At a command prompt, in the **Start Search** box, or in the **Run** box, type the following command:
mmc devmgmt.msc

In the device manager look under “Ports (COM & LPT)” for the WPD720 COM port.

2. Installation Instructions for Windows 7 (64bit)

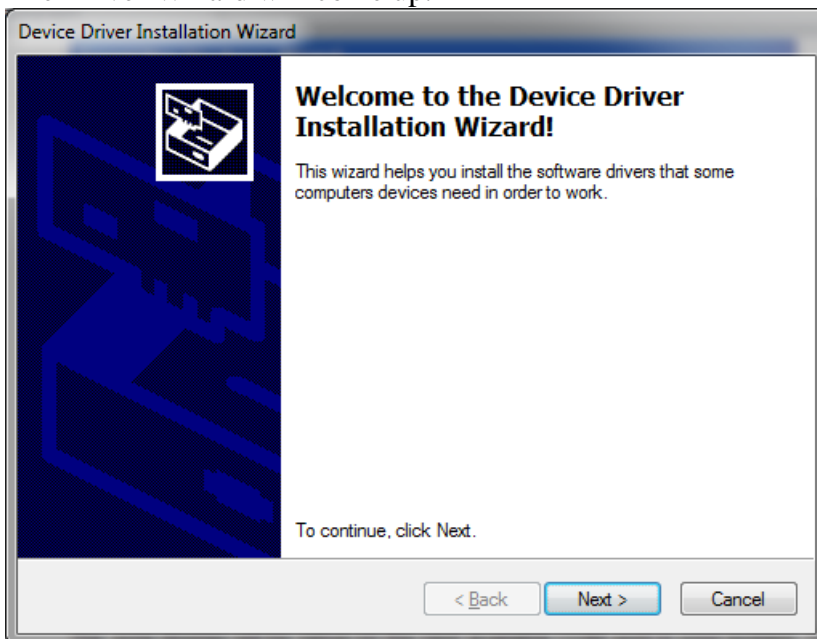
The drivers must be loaded before you plug in the Pole Display.

The drivers are located on the CD in the following folder. (“Drive Letter”:\WPD720_WPD220 Driver\64bitDriver\Win7)

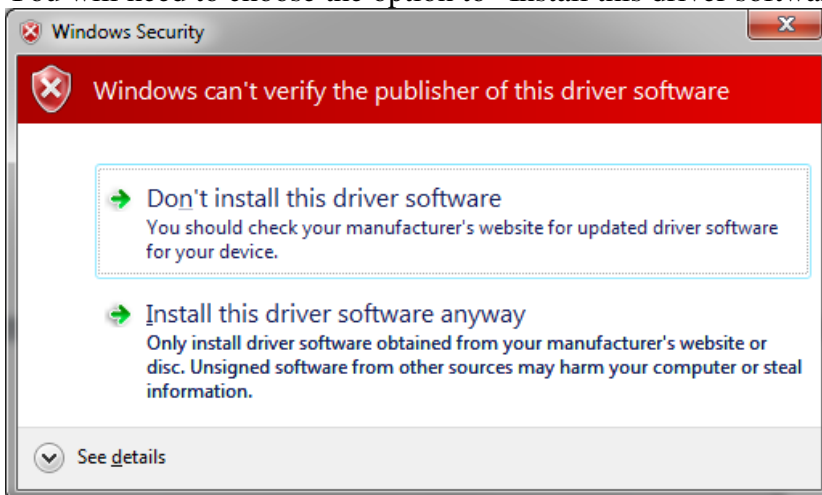
Once you browse to the folder with the drivers there is a file named DPInst.exe. (The .exe may not show depending on your settings in Windows.)

Double click on the DPInst.exe file to start the install.

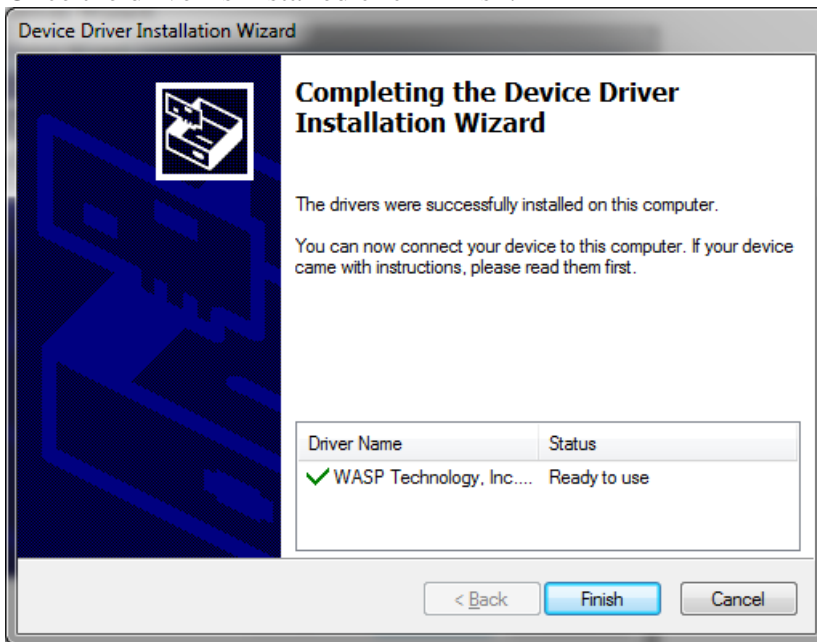
The Driver Wizard will come up.



You will need to choose the option to “Install this driver software anyway”.



Once the driver is installed click Finish.



You can now plug in the pole display.

The pole display will setup on the next available COM port in your system. You may need to look in the Windows Device Manager to get the port number.

At a command prompt, in the **Start Search** box, or in the **Run** box, type the following command:
mmc devmgmt.msc

In the device manager look under "Ports (COM & LPT)" for the WPD720 COM port.