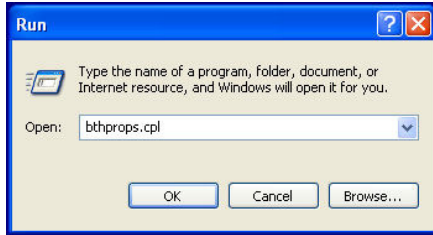
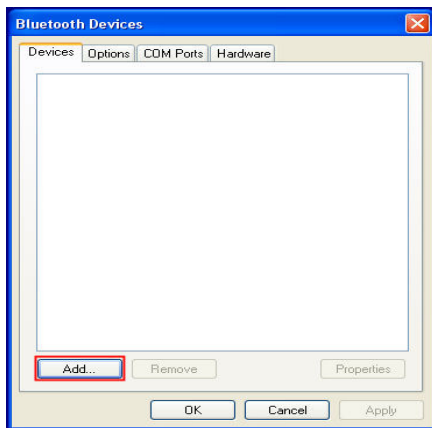


Before attempting to pair your device, please read through the following instructions, paying particular attention to Step 9.

1. Click Start, Run, then type `bthprops.cpl` in the box, then click OK (or press Enter key).



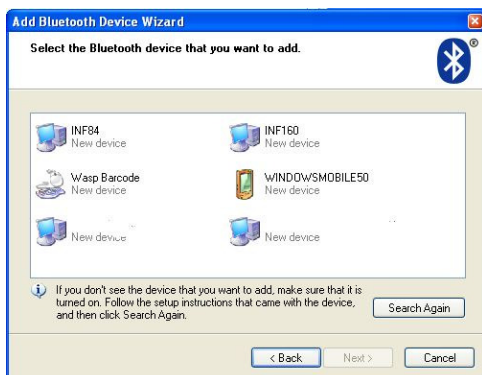
2. Click the Add button.



3. Check the box "My device is set up and ready to be found", then click the Next button.



4. Click the Wasp Barcode Bluetooth Keyboard, then click the Next button.



5. Click "Choose a passkey for me" but don't click Next yet.



6. Scan Factory Default



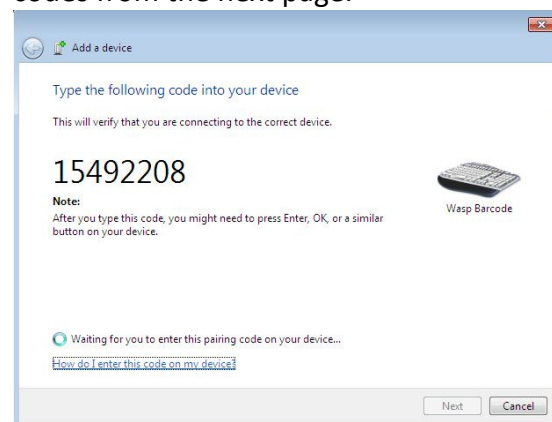
7. Scan Set Connection



8. Scan Start Pin



9. On the PC, click Next. A connection code will appear. In the next step, you will enter (by scanning barcodes) the code that appears on your screen. Do not enter the code from the example below since your code will be different. Note that Windows gives you only a short time to enter the code, so maintain a brisk pace when scanning the codes from the next page.



10. For each digit in the 8 digit code shown on your screen, scan the corresponding barcode below.

For example, if your code is 15492208, start by scanning the barcode for 1, then the barcode for 5, then the barcode for 4, etc. until you have scanned all digits in the code, then continue to the next step.



11. Scan Enter



ENTER

12. Scan Stop Pin



Stop Pin

If the device does not pair, click Back and repeat steps 5 – 12. Do not omit Step 12. Scan Stop Pin, even if you see a message on screen about installing device drivers or that pairing is complete.

To test the connection, open Notepad, MS Word, or some other application that accepts text input from a keyboard, then scan a barcode. You can try the Test Symbols in the scanner manual, or a UPC barcode from a product. The application should show the data from the barcode.

13. Click the Finish button.

