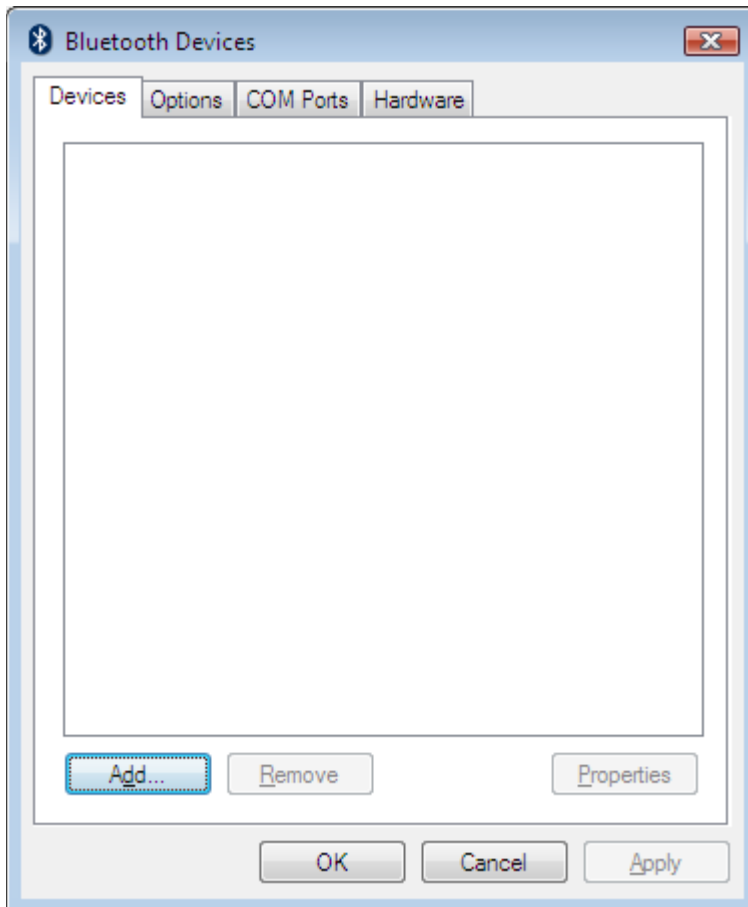


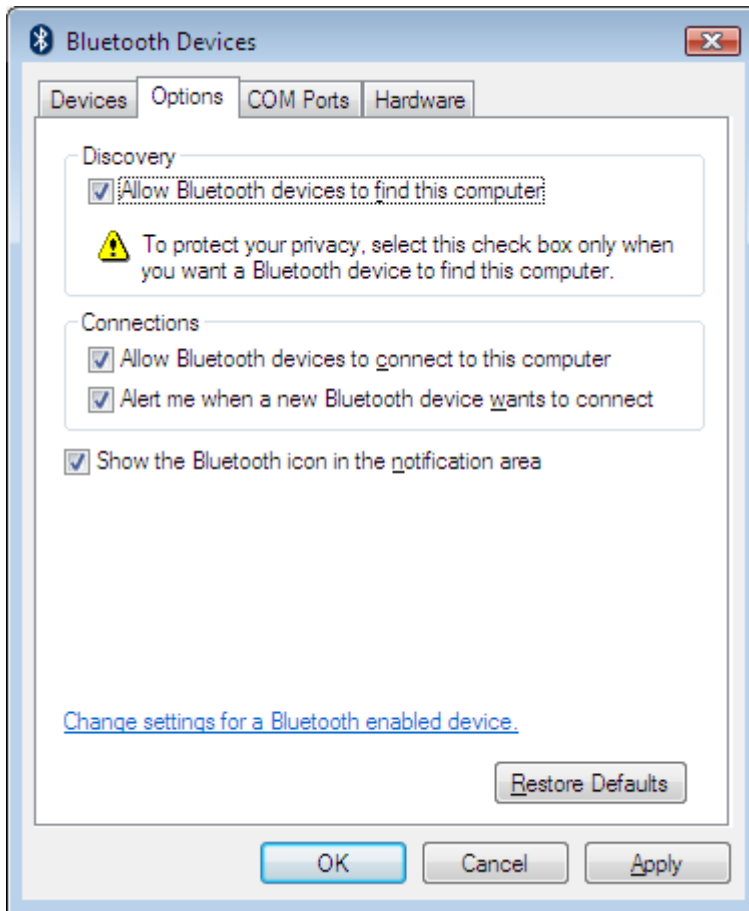
Scan the Set Connection Barcode

Plug in the Bluetooth adapter that came with the scanner

Once Windows installs the Bluetooth drivers you should see a Bluetooth icon in your System Tray. Double click on the icon and the image below should appear:

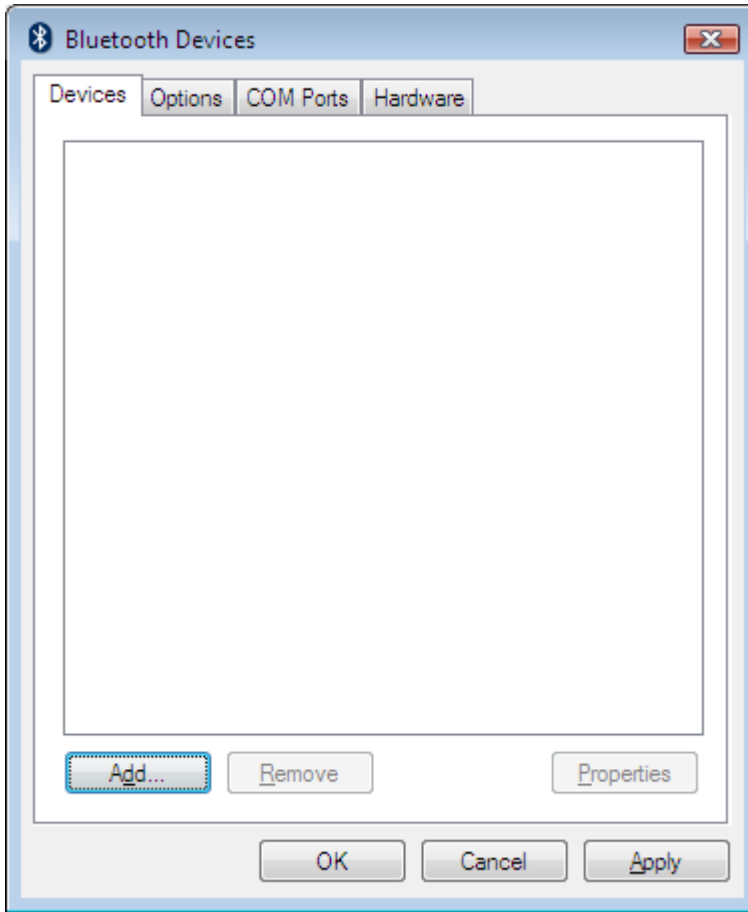


Click the options tab. Place check marks in ALL boxes as shown below. Then click apply and ok



Click on the Add button. The screen below will display.

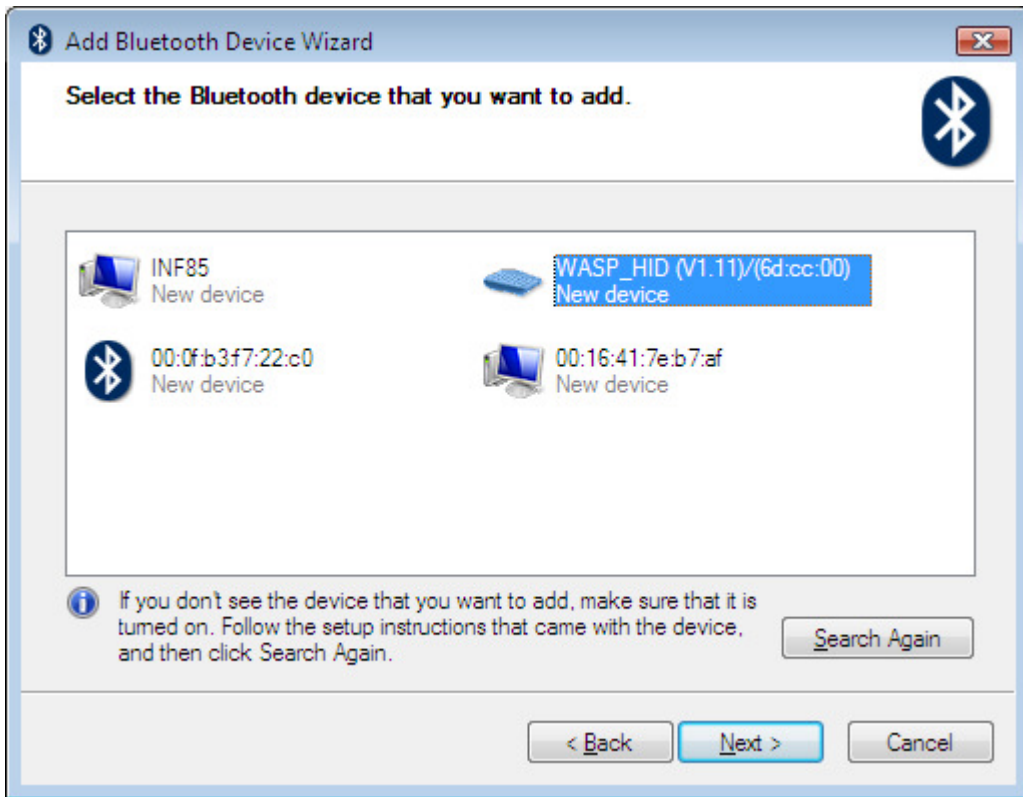
Click the devices tab. Click the add button as shown below:



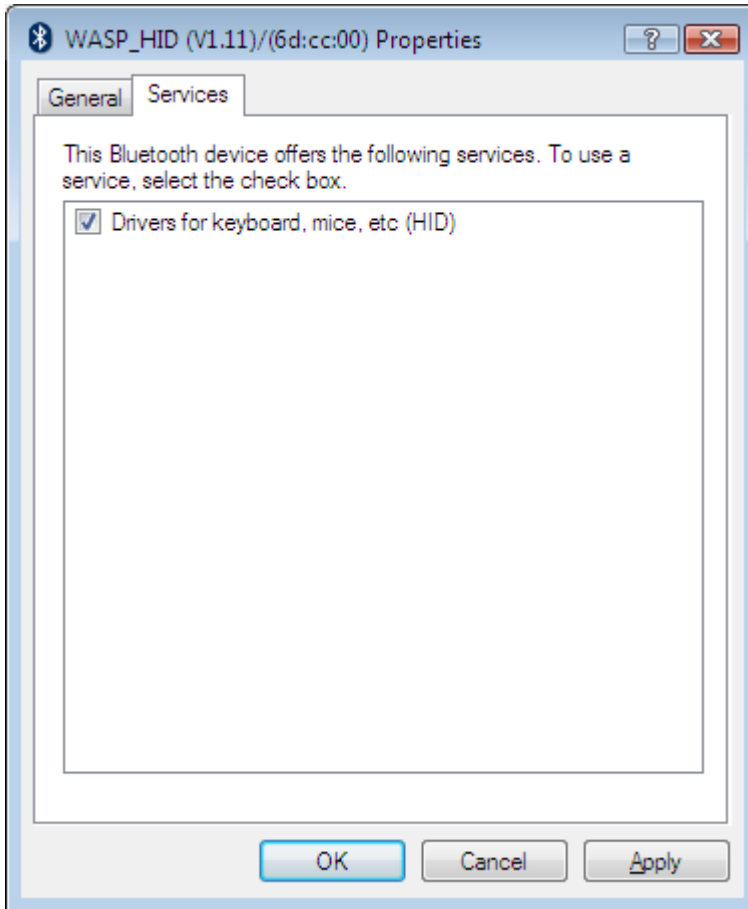
Place a check mark in the box that says My Device is set up and ready to be found. Click Next



Press and hold the trigger until the device populates:

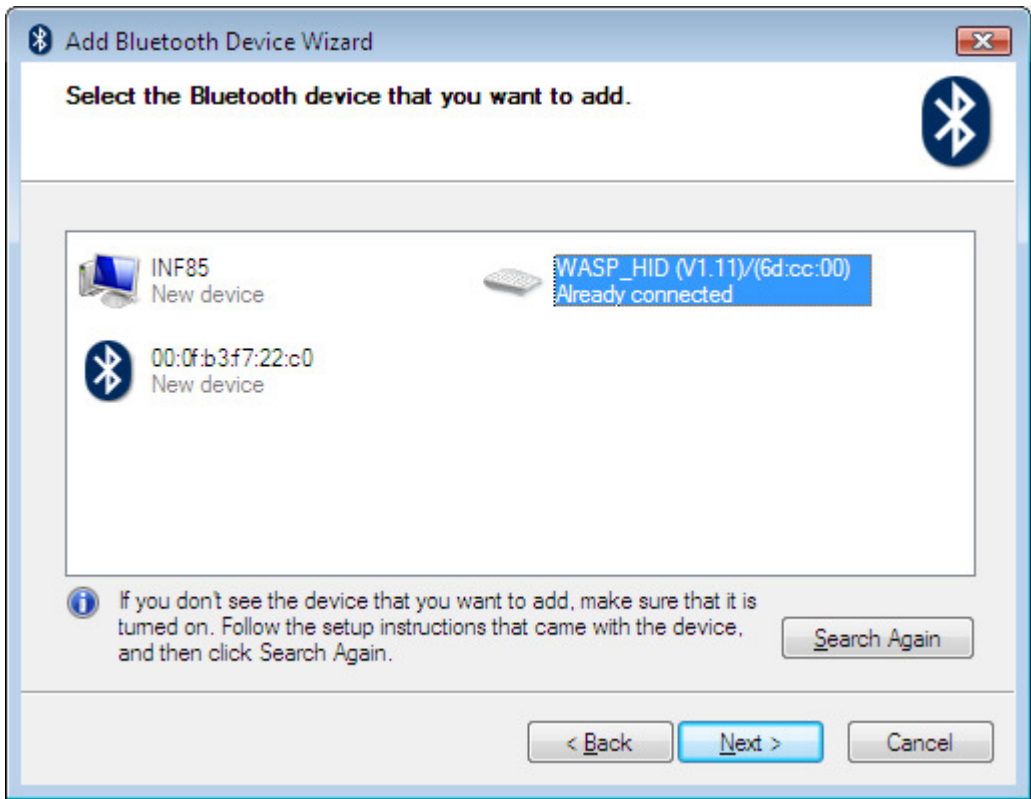


Right click on the Wasp\_HID (V1.11)/6D:CC:00) Choose Properties. Chose the tab that shows services. Place a check in Drivers for Keyboard, Mice, etc (HID) Then click apply.



Then press OK. The Bluetooth drivers should load successfully.

Your screen now should show already connected as below:



Click the Cancel Button Then ok button to exit. Your screen should now show as below;

