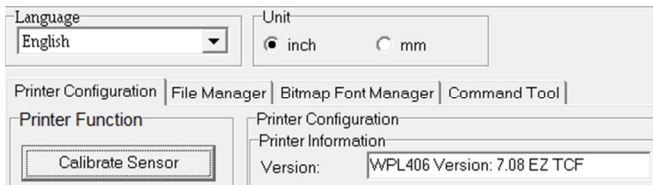


Create and send the .bas file to the printer

Use the Diagnostic Tool to send the programming file to the printer.

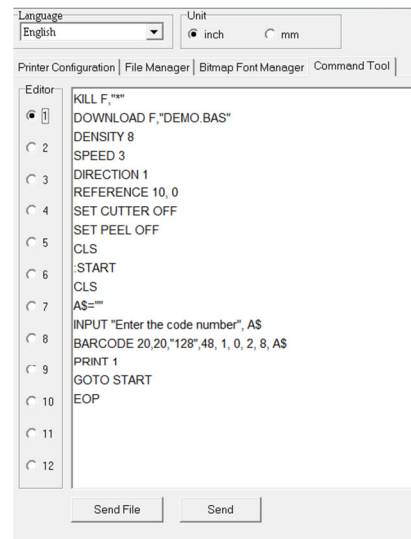
1. Connect the printer to the pc.
2. Launch the Diagnostic Tool.

The displayed Version number confirms the tool is communicating with the printer.

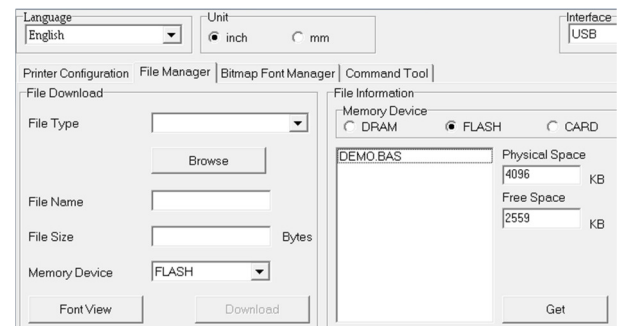


3. Select the Command Tool tab, copy and paste the text below into the window and click Send. The printer's screen will display 'Downloading...'

```
KILL F,""  
DOWNLOAD F,"DEMO.BAS"  
DENSITY 8  
SPEED 3  
DIRECTION 1  
REFERENCE 10, 0  
SET CUTTER OFF  
SET PEEL OFF  
CLS  
:START  
CLS  
A$=""  
INPUT "Enter the code number", A$  
BARCODE 20,20,"128",48, 1, 0, 2, 8, A$  
PRINT 1  
GOTO START  
EOP
```



4. From the File Manager tab in the Diagnostic Tool click Get. DEMO.BAS will be displayed in the window.



Calibrate printer and run the programming file.

Printer calibration and program execution from the printer

Calibration:

1. Menu > Setup > Sensor > Calibration > Select Mode > Automatic

Run Program:

2. Menu > Select File Manager > File List > Flash > Select *DEMO.BAS > Run

'Enter the code' will be displayed on the printer's screen.

3. Connect keyboard or scanner to rear usb port. Type the desired barcode content and press Enter or scan barcode with scanner.