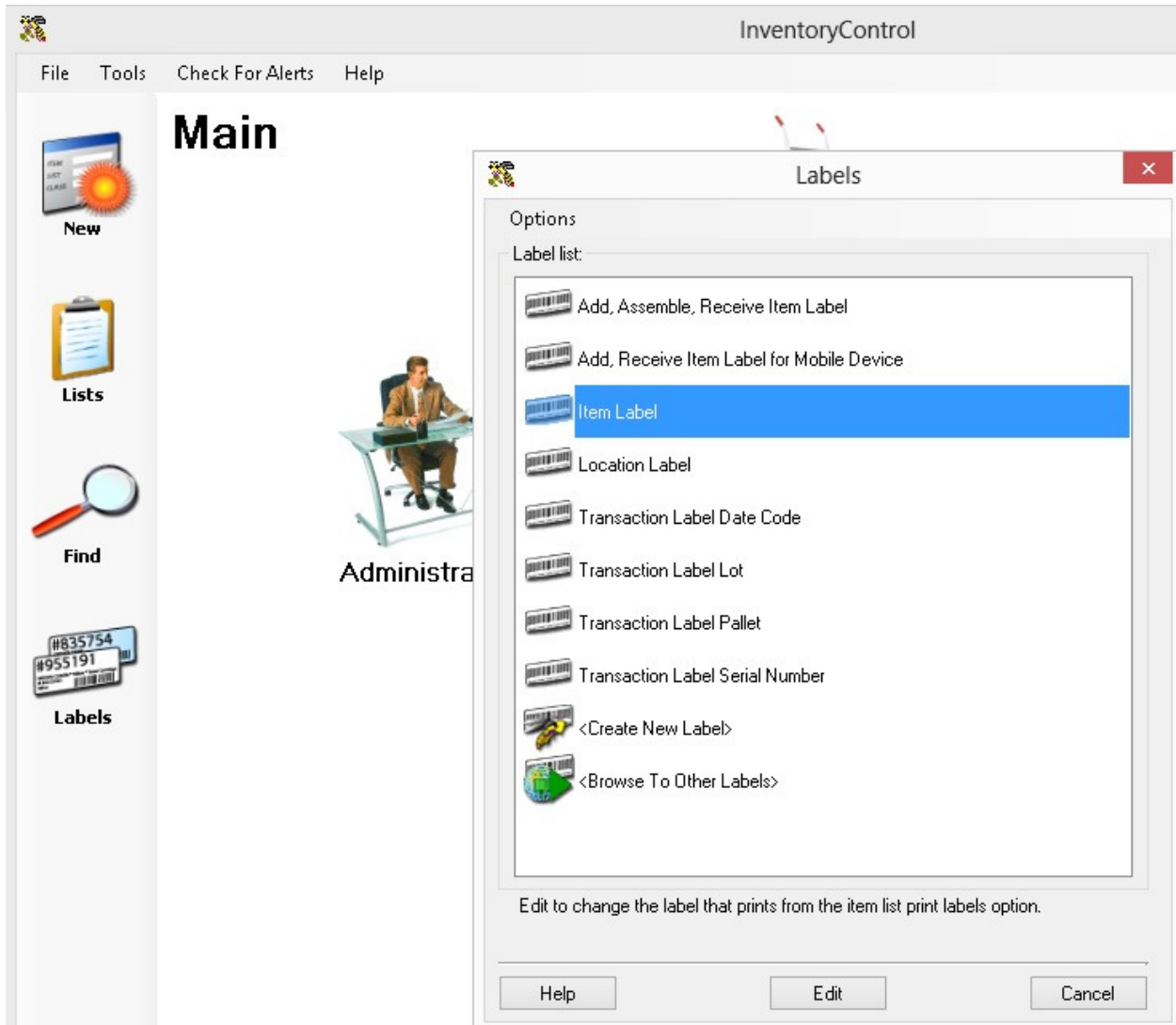
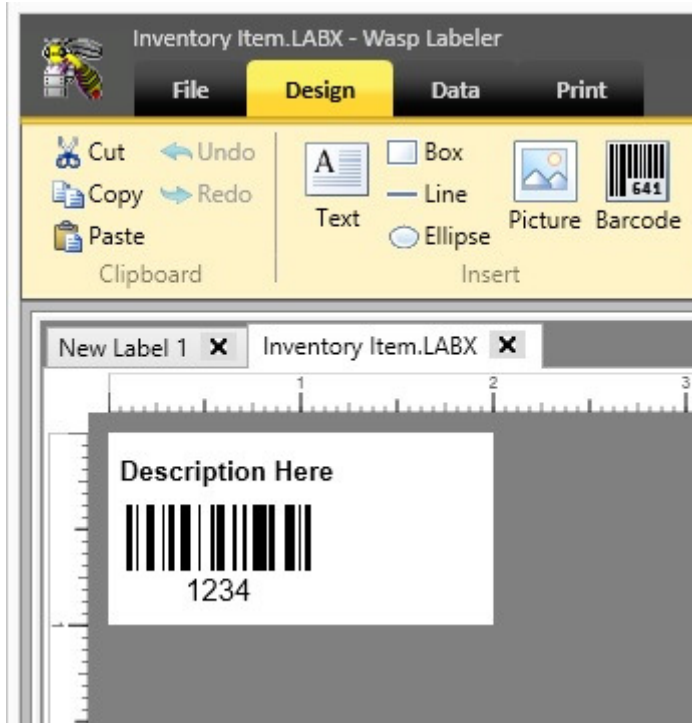


To start click on the **Labels** icon on the Main screen in Inventory Control. From there you will see a list of labels that Inventory Control uses that you can modify. For this example we will select the Item Label as shown below.



Once we select the Item Label the Labeler software will start up and load the label as shown below. From here you will want to click on the **Data** tab.

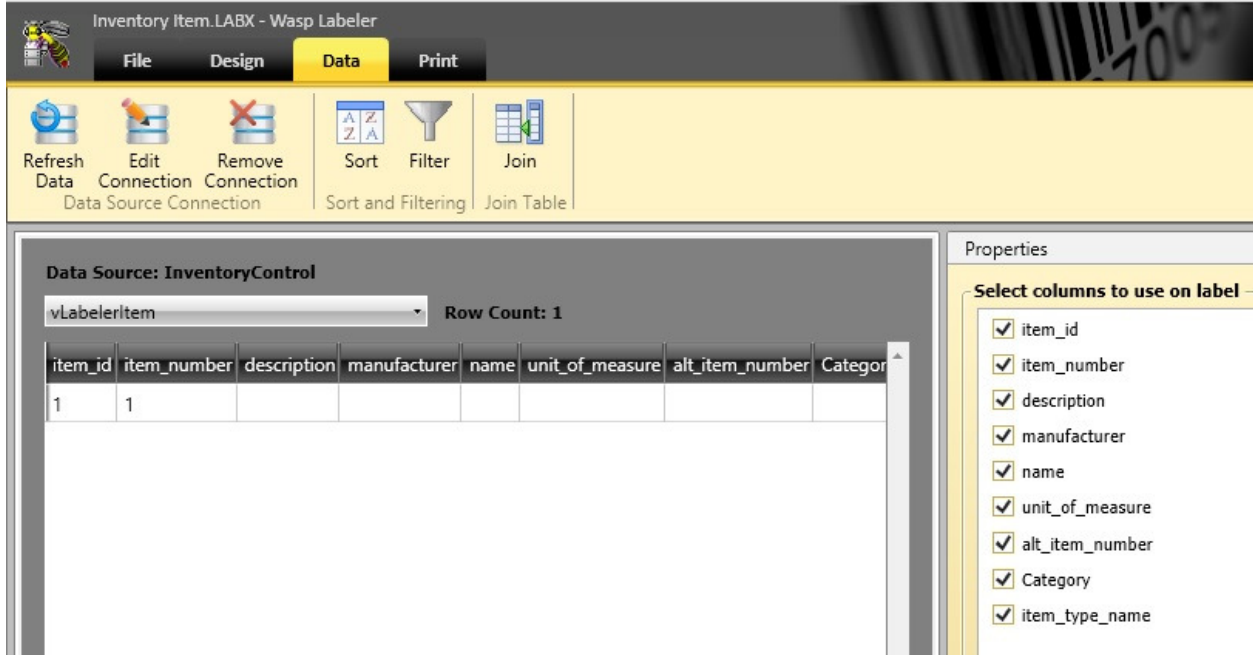


If you get a SQL error which prompts you for login information use the following:

Login ID: InventoryReader

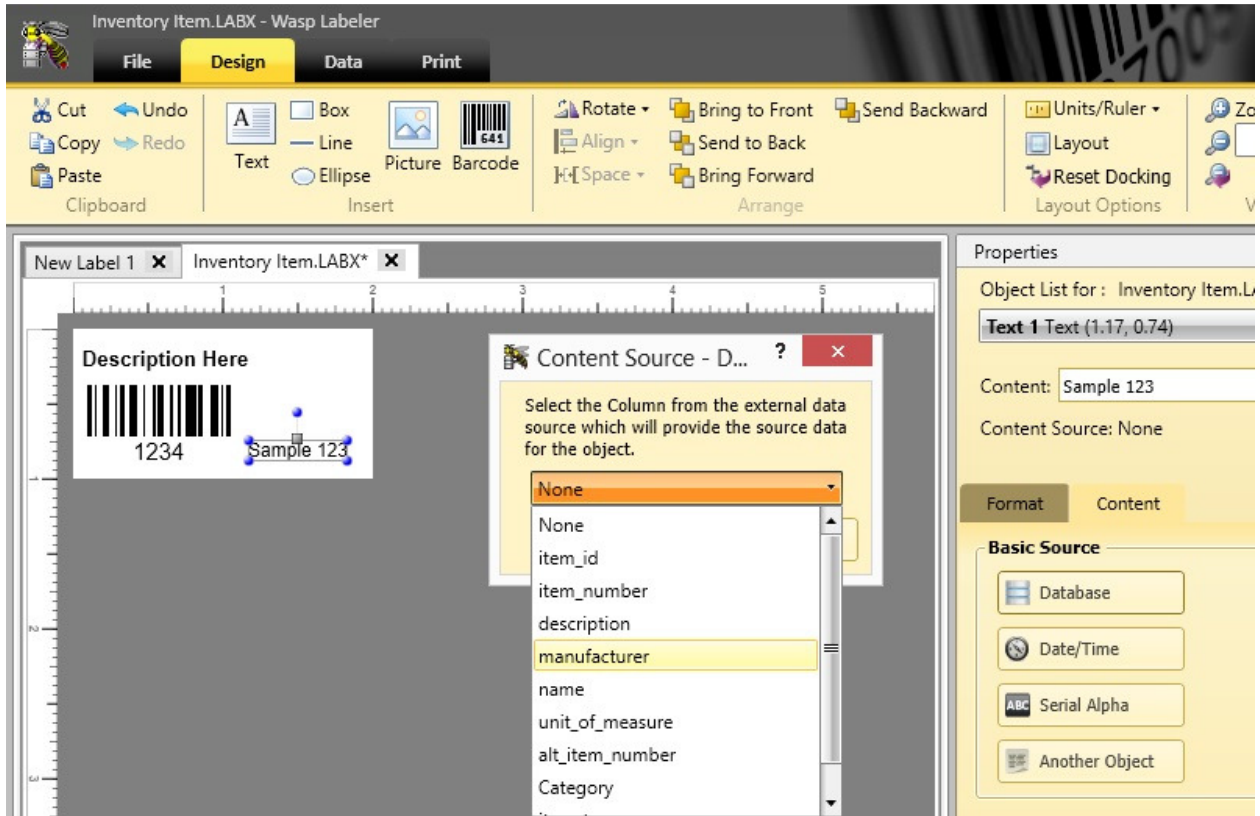
Password: ReadOnly@1ReadOnly@1

From the Data tab you will see the Data Source table that is associated with this label (vLabelerItem). In the **Properties** area on the right you will see all the fields of data that are available to the label. You can select any or all of these fields so they are available to be added to the label. After selecting the fields you want available to the label, you will want to click on the **Design** tab.

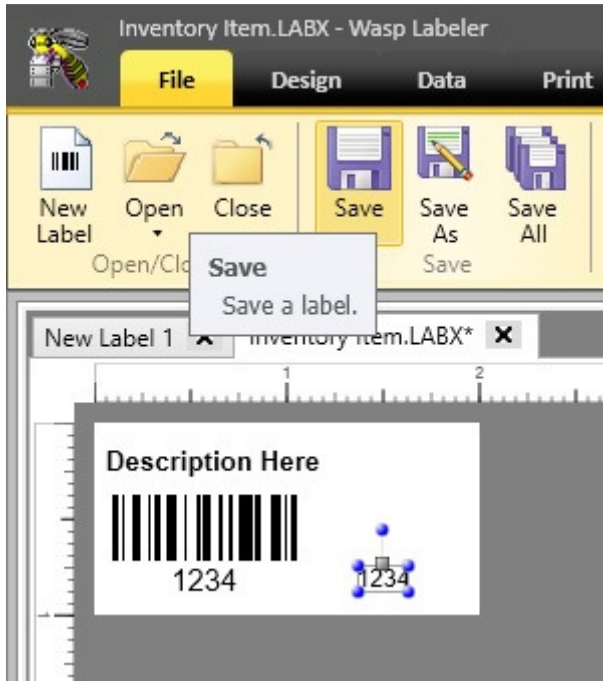


NOTE: Although it is possible to select other data tables, Wasp Technical Support will only handle support questions concerning the default table that is used by Inventory Control for the label in question. If you are unable to create a label on your own using the other data tables, Wasp Sales Dept. offers a fee based service to have our programmers create a label for you from any of the data tables that are available.

You will now need to insert a field to represent the new information that you want on your label. For this example we will add a new text field so left click the **Text** icon in the toolbar and hold your mouse button in to drag and drop the new text field into your label and then place it where you want it. This new text field will have the default name of Sample 123 as shown in the picture below. Next click on the **Content** tab in the Properties area in the right hand area of the screen. From there click on **Database** and you will see the **Content Source** window pop up. Click on the drop down menu to show all the data fields available for your label. For this sample we will select the manufacturer data field and then click on **Done**.



You are now finished editing the label. Click on the **File** tab then click on **Save** to save your changes. You can now close Labeler as you are done editing the label.



With this label now changed the item label when printed from Inventory Control will now have the manufacturer information in the bottom right area of the label as shown below in addition to the existing item number and description.

