

Here are steps and screenshots for creating (or verifying settings for) the ODBC connection for MobileAsset v6. Use the settings in the screenshots unless specified otherwise.

64-bit Windows: Use Windows File Explorer to find and run this program:

C:\Windows\SysWOW64\odbcad32.exe

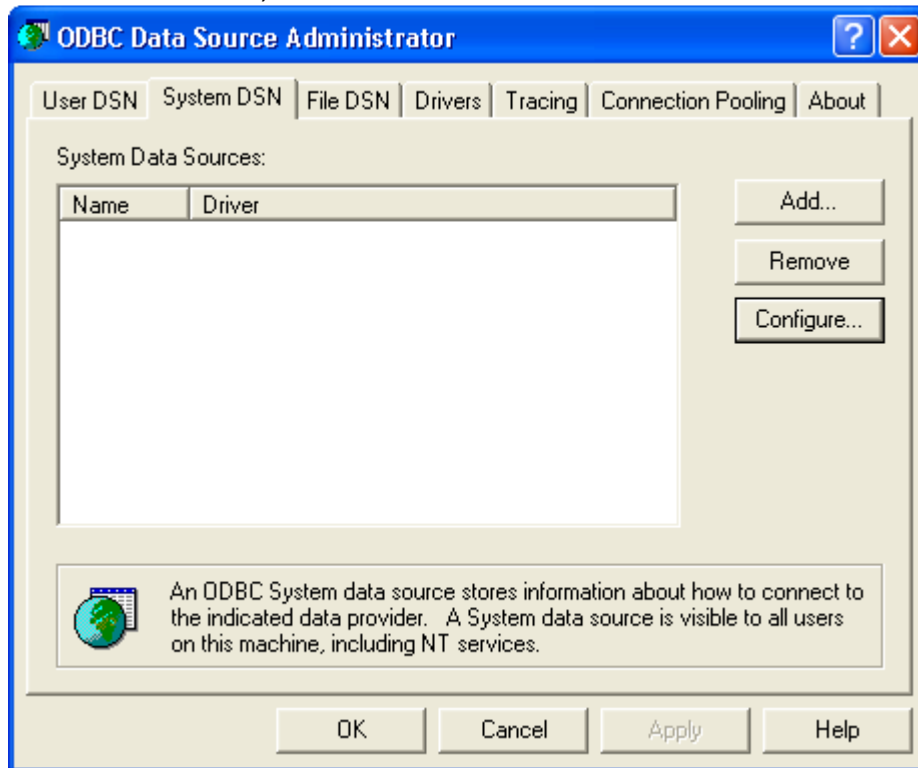
Note: Do not use Data Sources (ODBC) from Administrative Tools, since it will not work for 32-bit applications.

32-bit Windows: Start, Control Panel, Administrative Tools, Data Sources (ODBC)

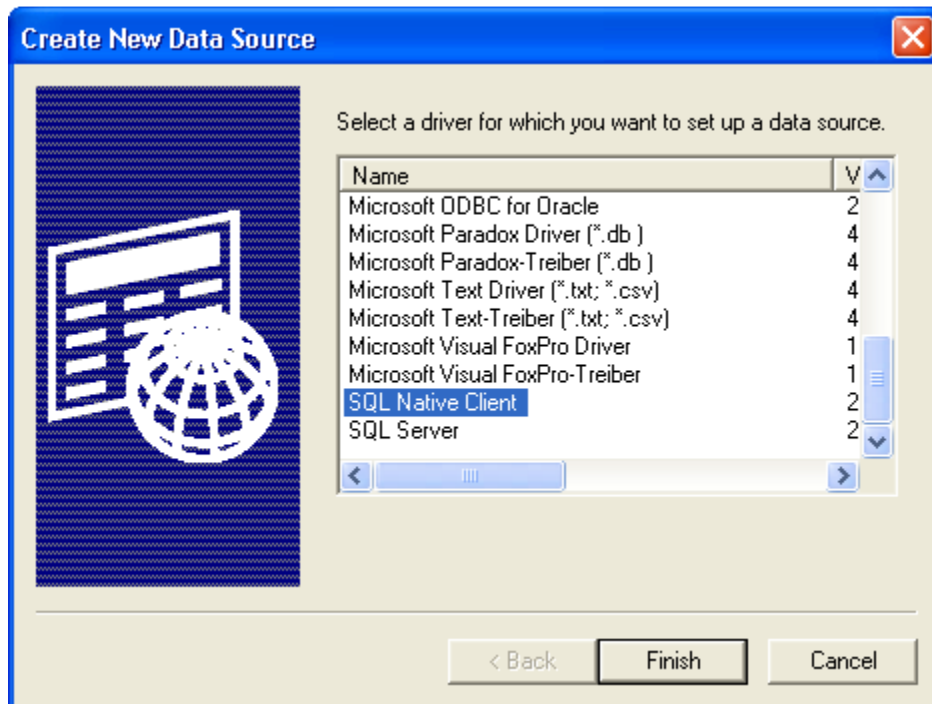
Both: Click the System DSN tab.

If you see a source called MobileAsset with driver SQL Native Client, click Configure, then skip ahead to "For the SQL Server field".

If the MobileAsset source is not there, click Add.



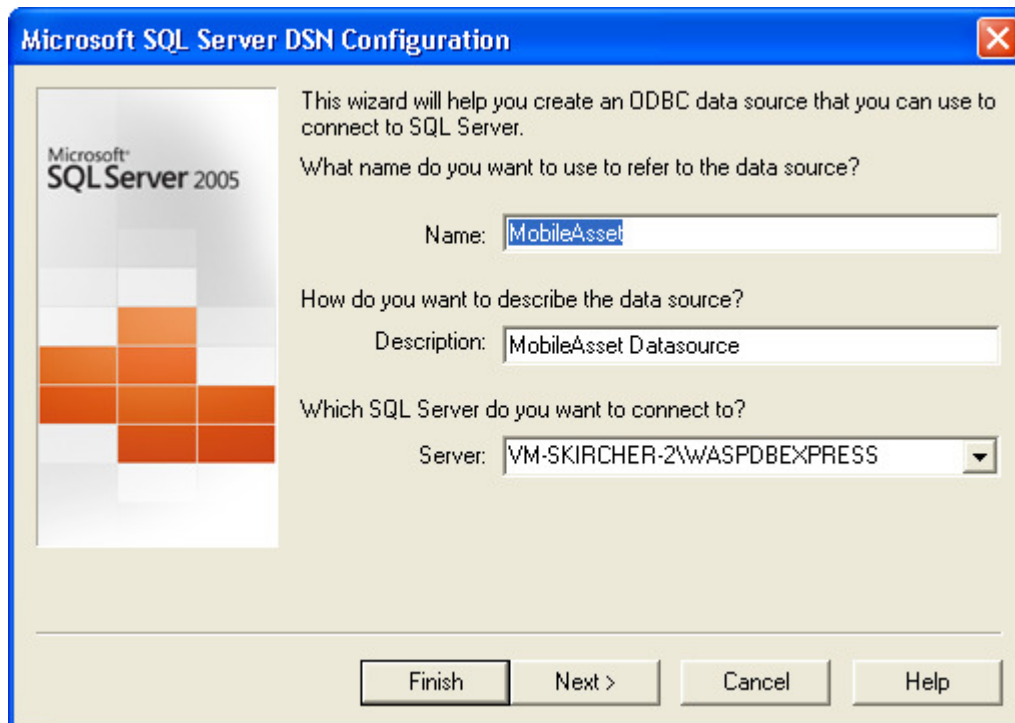
Select SQL Native Client. Click Finish.



For the SQL Server field, specify your SQL server name and SQL instance name in this form:  
SERVERNAME\INSTANCENAME

If you don't have an instance, don't include the backslash or instance name:  
SERVERNAME

Click Next.



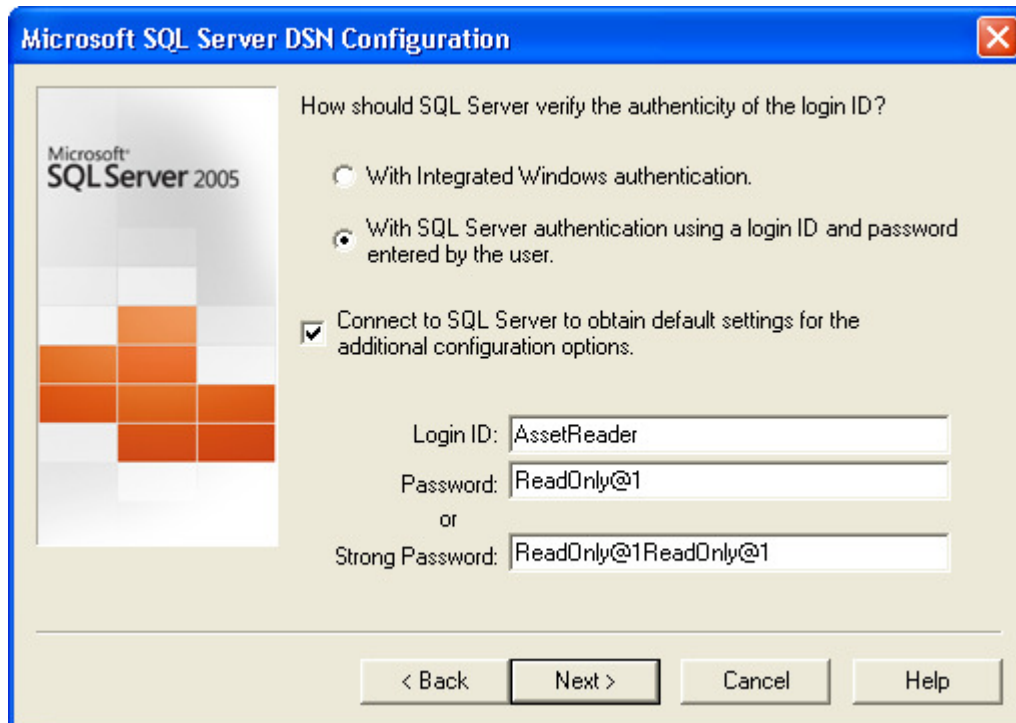
Login ID: AssetReader

Regular password: ReadOnly@1

Your network may require the strong password instead (common on military and government computers).  
If you don't know, use the regular password.

Strong password: ReadOnly@1ReadOnly@1

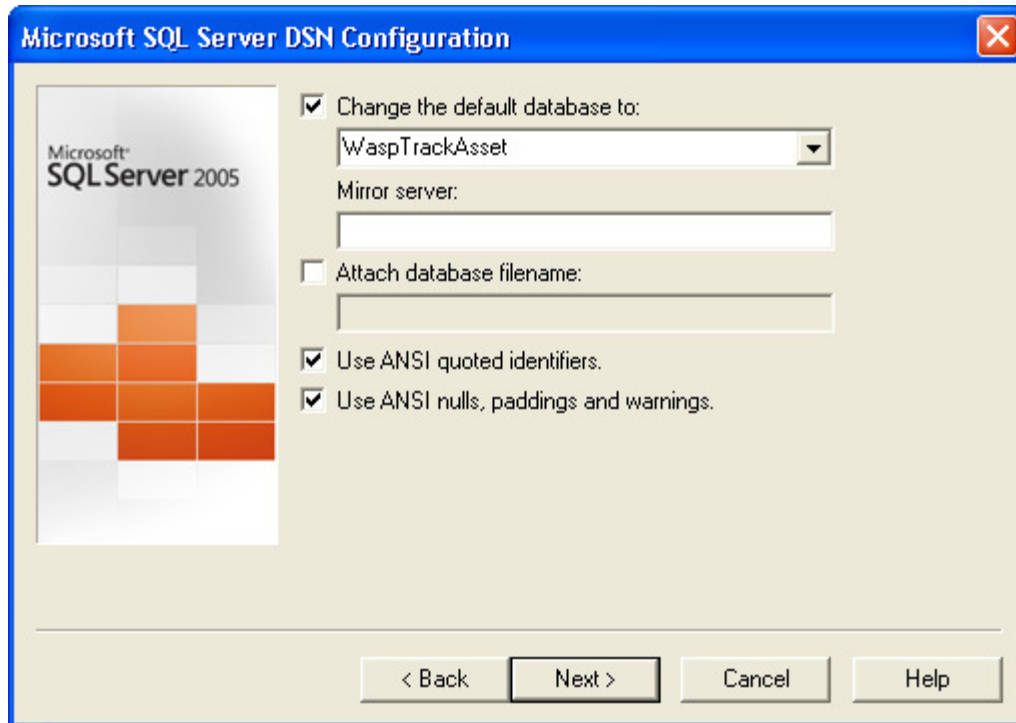
Click Next. If the password is incorrect, you will get an error and will not be able to proceed to the next screen.



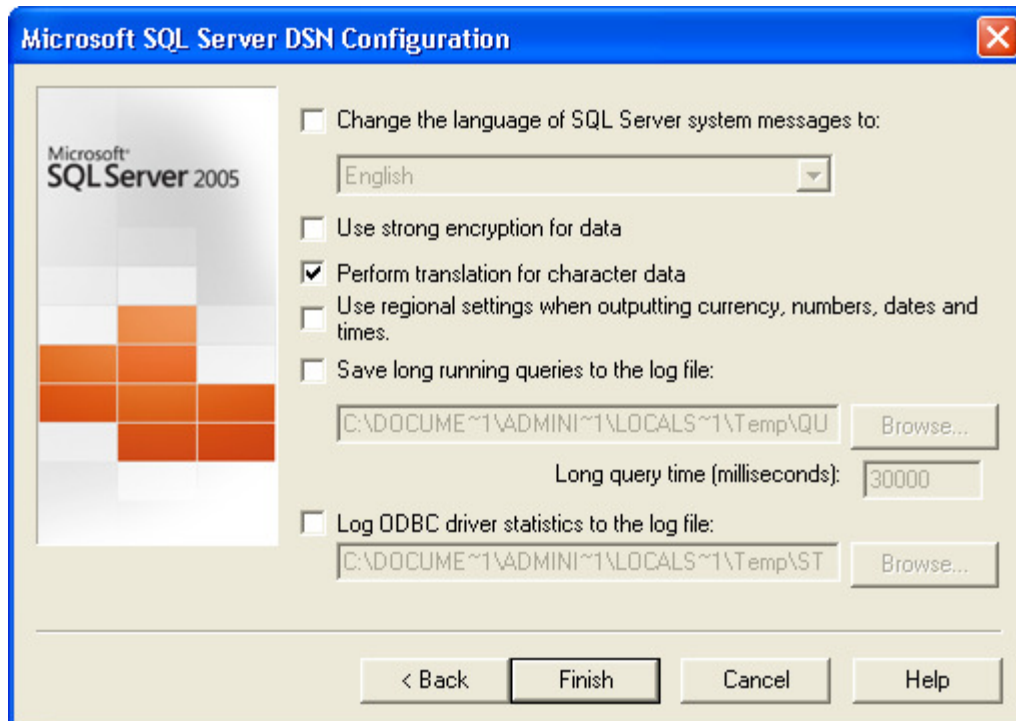
This screen actually only has one password field.

At the screen below, if the default database (first line) is not WaspTrackAsset, and you cannot set it as default, contact Wasp Tech Support for assistance. Technical note: The AssetReader account exists in SQL, but does not have proper access to the database; we need to run the CreateWaspAccounts.sql script.

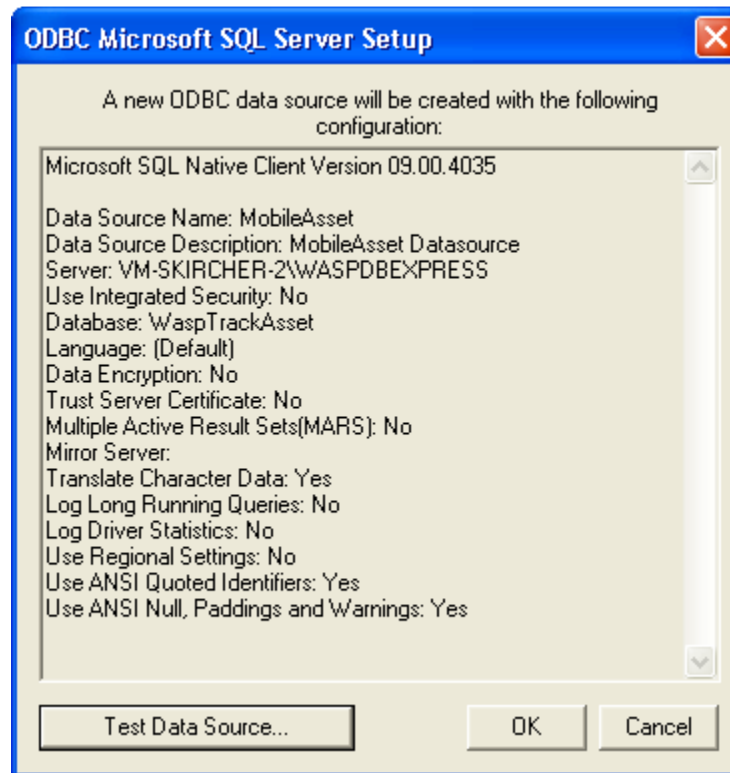
Click Next.



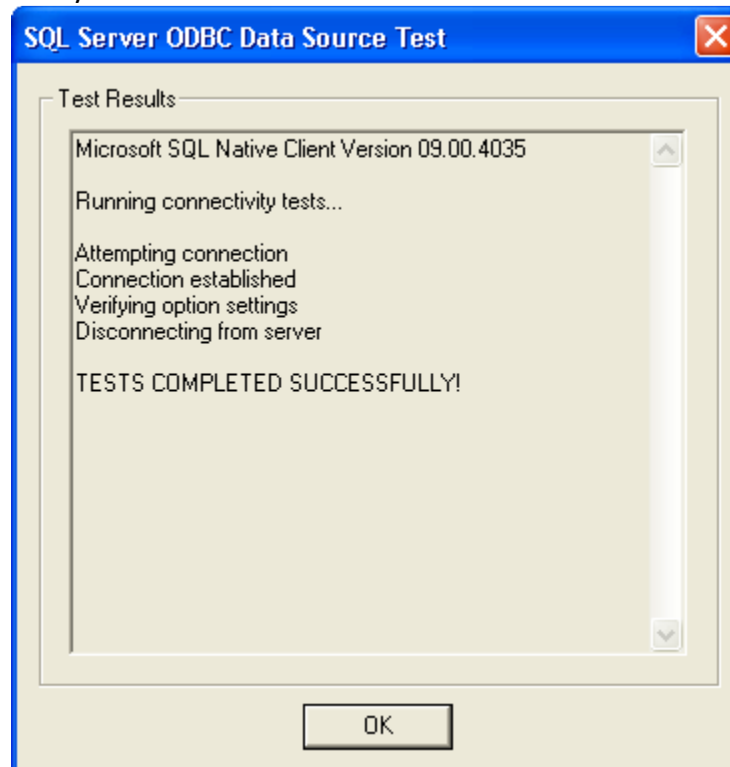
Click Finish.



If desired, click Test Data Source.



It should complete successfully. Click OK.



After creating the connection:

