


Read the following instructions completely before attempting to pair the scanner.

Start the Bluetooth pairing process for your PC or device. Steps for some versions of Windows are shown below (adaptable to other OSes).

1. Right-click the Bluetooth icon  in the system tray near the clock, then click "Add a Device".



2. Scan **Factory Default**

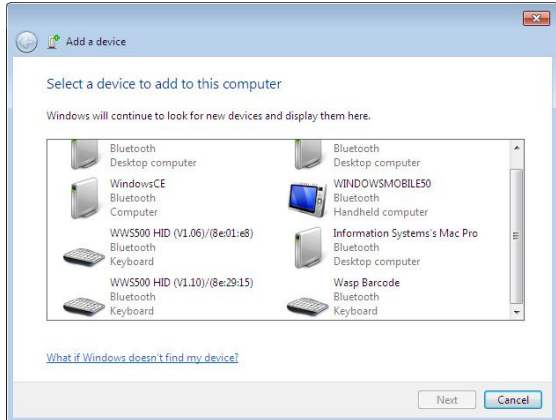


3. Scan **Bluetooth HID**



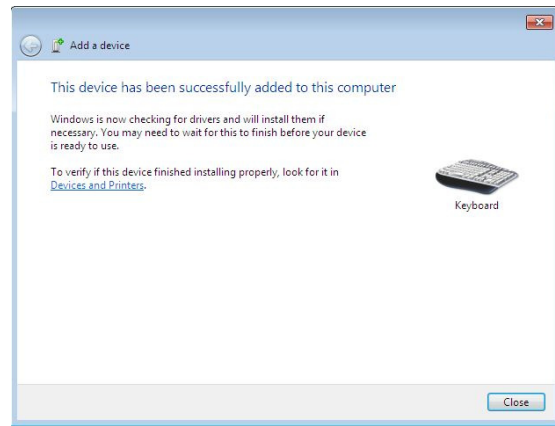
4. Scan **Set Connection**

5. When it appears in the pairing list, click Wasp Barcode (or "Wasp Bar") Bluetooth Keyboard, then Next (or double-click it).



6. If you get a prompt about entering a pairing code or Pin, go to Step 9 on the next page.

(Note: Scanners with newer firmware versions may pair without prompting for a Pin. **This is normal.**)



7. Windows should say "This device has been successfully added to this computer" or similar. Click the Close button. **Keep reading!**

Important Note: Despite what the message above says, Windows may still require more time (possibly 2-3 minutes) to completely install the device driver for the scanner. Watch for another notification about the driver installation being complete. Do not attempt to scan barcodes while this driver installation is in progress; this can prevent the scanner from pairing properly.

8. Test:

Launch Notepad, MS Word, or some other application that accepts text input from a keyboard, then scan a data barcode (e.g. Test Symbols in Appendix A of the full user manual, or a UPC barcode from a product). The application should show the data from the barcode.

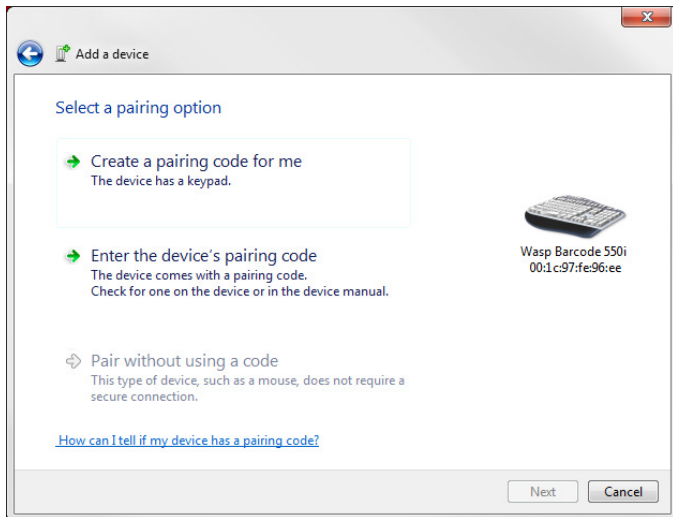
If the device repeatedly fails to pair, it may be in a partially installed state. Go to Start menu, Devices and Printers. In the Devices section, look for a Wasp Barcode Keyboard (or similar name). If you find one, right-click it, then Remove Device. When that completes, go back to the beginning of this procedure and try again.

If you entered a Pin, but the scanner beeps 5 times when scanning a barcode, scan Stop Pin, then try scanning again.

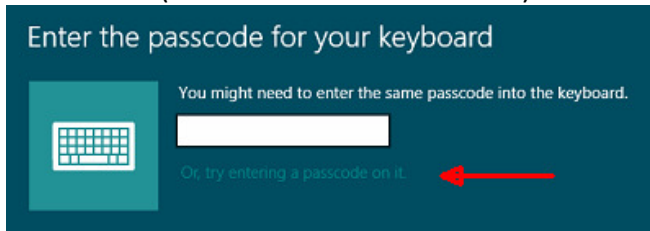
This page is for use only with a pairing code or Pin.

9. Click "Create a pairing code for me", "Choose a passkey for me", "Or, try entering a passcode on it", or similar verbiage.

Windows 7:



Windows 8 (click the link below the box):



Notes:

- Do not enter the example code from Steps 10 or 12, since your code will be different.
- Do not scan all the barcodes below in order; instead match each code digit to a barcode digit (Step 12).
- Maintain a brisk pace; Windows times out quickly. If so, click Try Again, then go back to Step 11 (Start Pin).
- You should hear only one beep per digit barcode. If there are three beeps, go back to Step 11 (Start Pin).
- Don't forget to scan Stop Pin in Step 14.



1



2



3



4



5



6



7



8



9



0

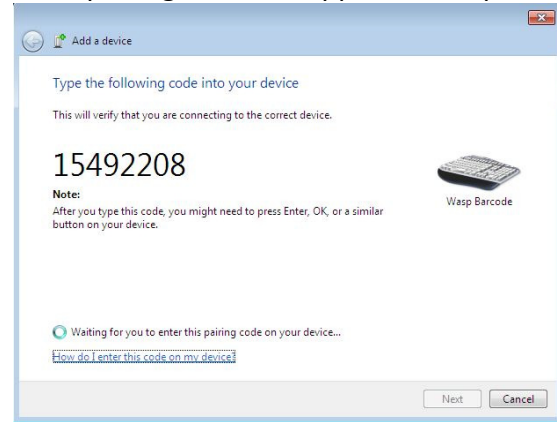


Enter



Stop Pin

10. A pairing code will appear. Example:



11. Scan Start Pin

12. For each digit in the code shown on your screen, scan its corresponding barcode (below).

For example, if your code is 15492208, start by scanning the barcode for 1, then the barcode for 5, then the barcode for 4, etc. until you have scanned all digits in the code, then continue.

13. Scan the Enter barcode (below). Windows should begin to install the device. Continue with the procedure.

14. Scan Stop Pin (below). Go to Step 7.